



Viva

Simplicity that lasts

No. 2



BJC



Viva

Simplicity that lasts



“ Our lifestyles and dreams are constantly changing. Designed for young and practical people who care about the environment and are always on the go.

Viva

Simple lines
and shapes

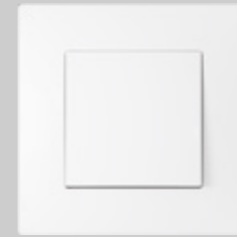
A versatile series with a timeless design, based on simple lines and shapes. Designed and manufactured in Rubi to BJC's quality standards, at a highly competitive price.



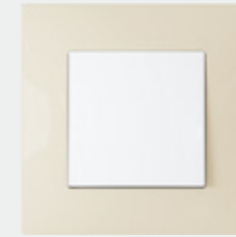
“

These combinations create a simple design and can be easily adapted to today's decoration styles.

BJC



Polar White



Sand Beige /
Polar White



Piano Black /
Polar White



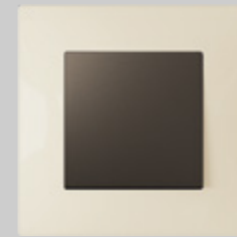
Stone Grey /
Polar White



Piano Black /
Moon Silver



Polar White /
Moon Silver



Sand Beige /
Lava Grey



Stone Grey /
Lava Grey



Moon Silver



Lava Grey /
Moon Silver



Lava Grey



Moon Silver /
Lava Grey

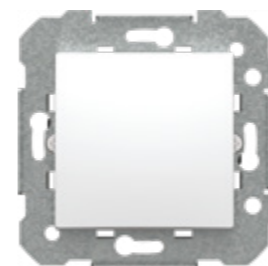


Viva

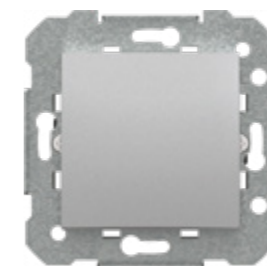
It's that simple

“ Only two references.
Choosing a product from
the Viva range is easy.

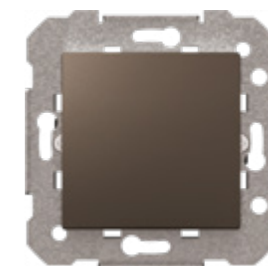
1 - Choose a feature with the switch colour



Polar White



Moon Silver



Lava Grey

2 - Choose the frame colour



Polar White



Stone Grey



Piano Black



Sand Beige



Moon Silver



Lava Grey

Viva

Accuracy and reliability

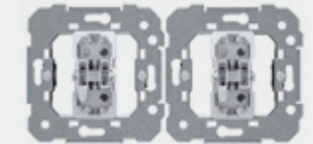
“ The stylish design of the Viva series fully integrates the mechanism into the wall.



The modular surface mounting box can be used to form surface mounting boxes with up to 4 gangs, blending seamlessly with the series' aesthetic.



Two grooves on each side of the metal frame help to align different mechanisms



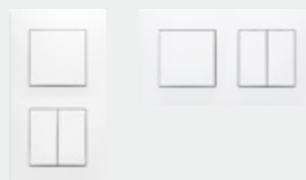
Cover for the socket outlet, with a concealed screw. Quick and accurate connection



The frame can be fixed or extracted without the need to remove the switch



The same frame is used for horizontal and vertical installations

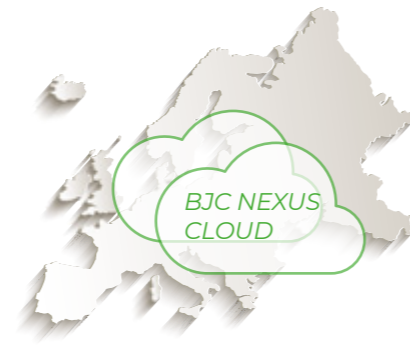


Compatible with BJC Nexus Smart Home

The frames fit into the fixing frame using sturdy tabs that are specially designed to compensate for uneven walls, ensuring a solid fit and precise finish



- Wireless. Installed and extended without the need for building work.
- Control via a smartphone, tablet, the cloud, from both inside and outside the home.
- **Made in Europe** according to strict quality standards and European regulations, allowing us to provide a 5-year warranty.
- Compatible with Google Nest and Alexa voice assistants.
- Control it using the free BJC Nexus app, as well as the Google Home and Amazon Alexa apps.
- Can be integrated with Home Assistant.
- Cloud located on **servers in Europe** with European cybersecurity and data protection standards.
- You can combine the modules with any model in the BJC series to get your home connected.



BJC Nexus Cloud located in Europe



Download the BJC Nexus app



Combine the modules with the Viva series to get your home connected.



4 digital input module



One-way switch module



Double one-way switch module



Universal dimmer module



Blind control module



NXDALI32 module



Motion detector



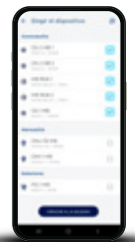
Flood detector



Door/window detector



Desktop gateway



BJC Nexus app



“

The BJC Nexus system provides full, easy control of your home from your mobile device using the dedicated app, as well as through compatible voice assistants such as Alexa or Google Home.



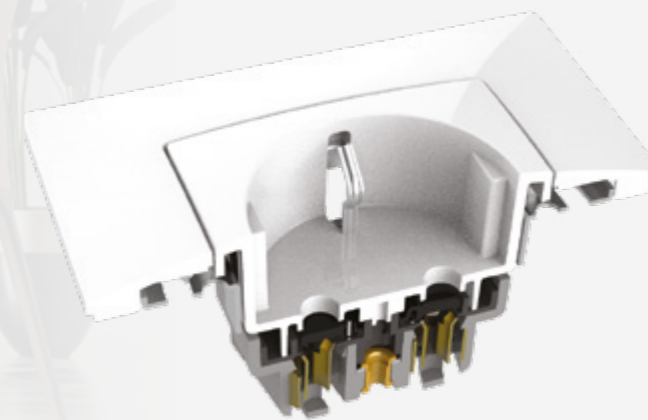
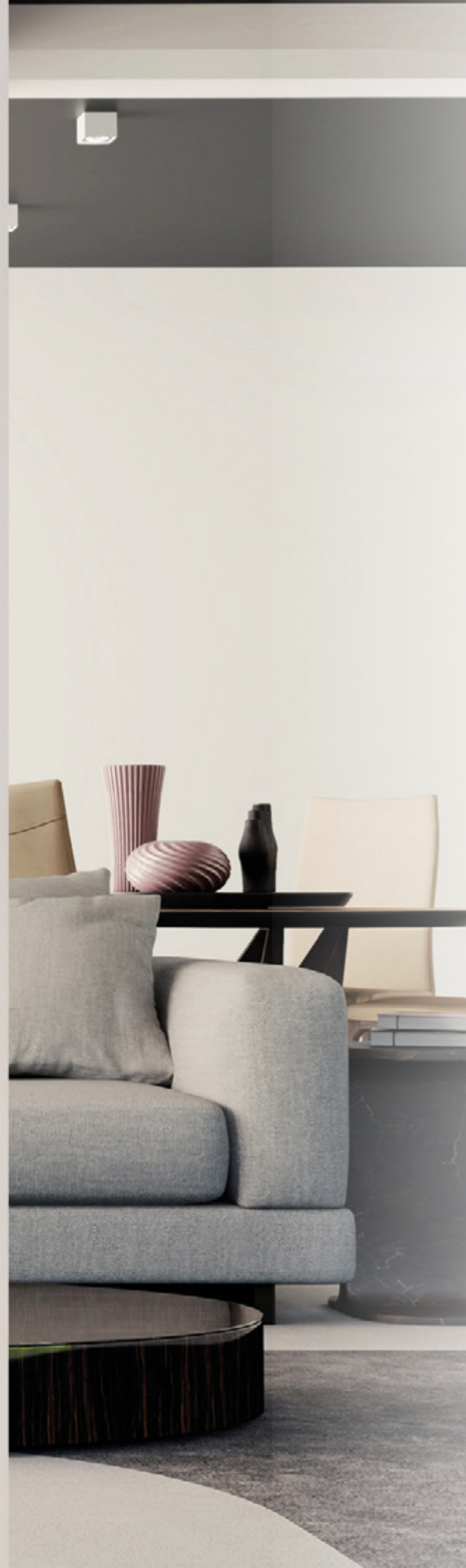
Discover the advantages of BJC Nexus in our video



Find out more about BJC Nexus

Viva

Simplifies installation
processes

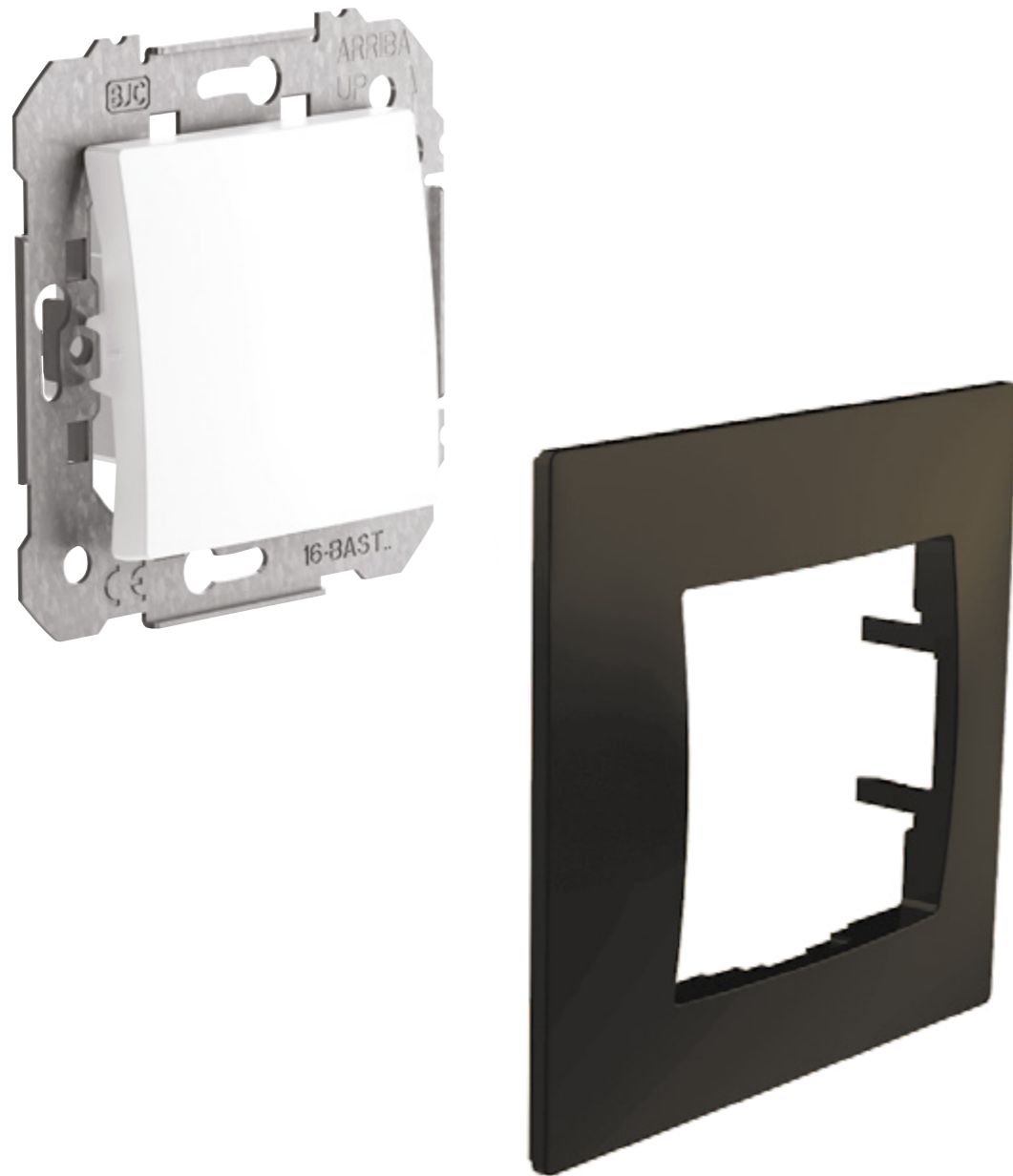


Viva is designed to meet international standards, including EU environmental directives. BJC systematically uses materials and production methods that have the least possible impact on the environment. All BJC Viva packaging materials and product components can be recycled at the end of their useful life.

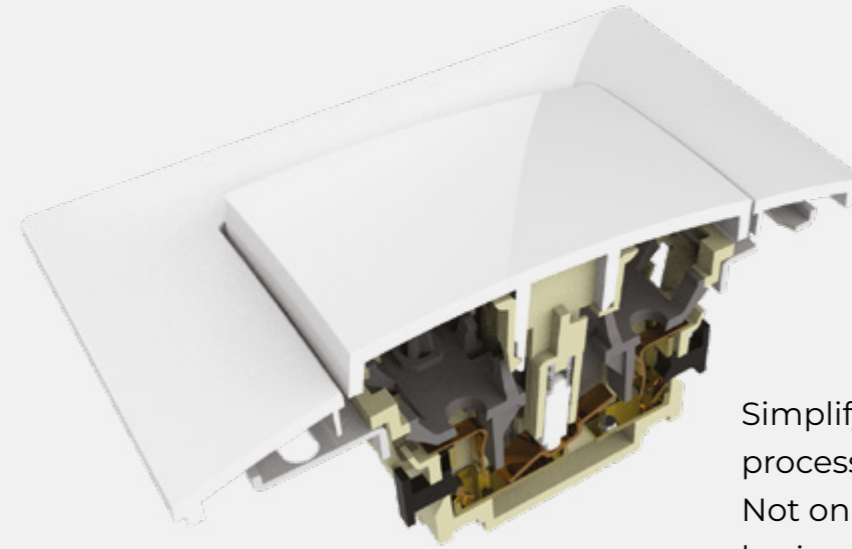
“ It is suitable for both new buildings and renovation projects. The metal frame can be adapted to all types of surfaces.

Viva

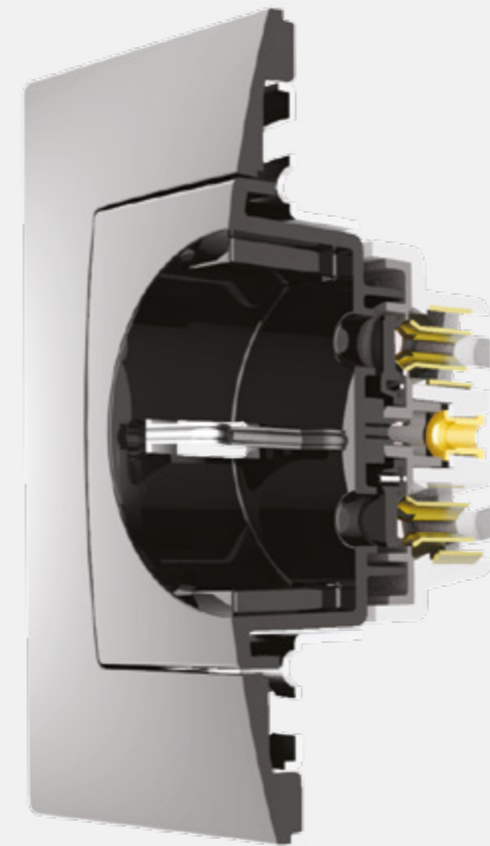
Viva is simplicity



“ The Viva series offers modern designs with simple lines and shapes, combining two colours on the frame and switch.



Simplify your logistics and purchasing processes with just two references. Not only can the frames be assembled horizontally or vertically, they can also be attached or removed without the need to remove the switch.



- The galvanised steel fixing frames are treated to prevent corrosion and ensure durable installation components.
- Fixing frames with top and bottom profiles make assembly easier and ensure that the mechanisms in multiple frames are correctly aligned.

Viva

Seamless integration

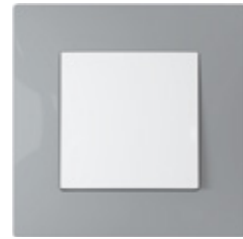


“

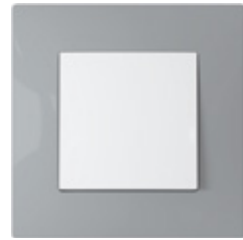
The stylish design of the Viva series fully integrates the mechanism into the wall.

Viva

Many different functions



Smart Home
Combining BJC Nexus modules to get your home connected.



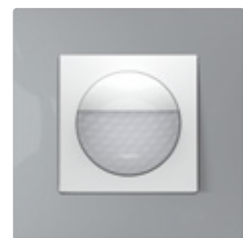
1 Push-buttons
This momentary-action push-button is ideal for bells or timed lights.



2 Dimmers
Dimmers are the perfect way to create an atmosphere in rooms by adjusting the lighting levels to the desired intensity.



3 Multimedia
HDMI, VGA, RJ45, stereo, etc. connectors for a clean and cable-free installation. Ideal for homes and businesses.



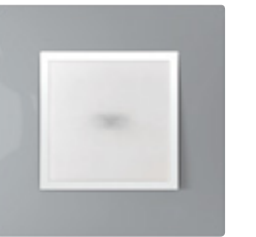
4 Motion detector
This practical and convenient safety solution also cuts costs.



5 Centralised blind control
Allows all blinds to be raised or lowered with a single push-button, individually or together.



6 Dual USB chargers
USB Type A and C with fast charging and Power Delivery.



7 LED beacon light
They allow you to illuminate: stairs, waiting rooms, interiors, corridors and calls.



8 Buzzer
Works like a bell, ideal for signalling access or calls.



9 Thermostats
Our thermostats can be used to control and adjust the temperature in each room.

“ The Viva series offers a wide range of functions to meet today’s needs. Light intensity dimmers, thermostats, motion detectors.

Reference table for composing basic functions - Viva

Function	Mechanism + Cover	Frame
One-way switch	23505*	23001*
Two-way switch	23506*	23001*
Intermediate switch	23507*	23001*
Double one-way switch	23509*	23001*
Double two-way switch	23510*	23001*
Push-button, bell symbol	23516-1*	23001*
Push-button, bulb symbol	23516-2*	23001*
Rotary dimmer	21550-X + 23279*	23001*
Schuko® socket outlet	23524*	23001*
Schuko® socket outlet + dual USB Type A and Type C	23526-USBC*	23001*
Television socket outlet	23330*	23001*
Single RJ socket outlet	23682-1*	23001*
Double RJ socket outlet	23682-2*	23001*
Blank cover	23033*	23001*
Cable output	23534*	23001*
Buzzer	23536*	23001*
Key card switch	23068*	23001*
Schuko® IP44 socket outlet	23526-3X*	23001*

* For remaining colours, add the extension colour:

Colour	Covers			Frames		
	Colour	Code	Circle	Colour	Code	Circle
	Polar White	-	●	Polar White	-	●
	Moon Silver	-PL	●	Stone Grey	-GP	●
	Lava Grey	-GL	●	Piano Black	-NP	●
				Beige	-A	●
				Moon Silver	-PL	●
				Lava Grey	-GL	●



View the whole Viva series





[Visit our website](#)

BJC

Fábrica Electrotécnica Josa, SAU
Av. de la Llana, 95
08191 Rubí (Barcelona)
España / Spain

Customer Service
935 610 526
sac@bjc.es

Technical Support
900 67 00 68
sat@bjc.es

Sales Administration
900 67 00 77
ventas@bjc.es

www.bjc.es

